

# HC-B 6-TFL-N-O1STM20S - Housing



1460346

<https://www.phoenixcontact.com/us/products/1460346>

Please be informed that the data shown in this PDF document is generated from our online catalog. Please find the complete data in the user documentation. Our general terms of use for downloads are valid.



HEAVYCON B6 sleeve housing, for single locking latch, height: 56 mm, with 1 x M20 thread, lateral cable outlet

## Commercial data

Item number	1460346
Packing unit	1 pc
Minimum order quantity	10 pc
Note	Made to order (non-returnable)
Sales key	BF55
Product key	BF7AAC
Catalog page	Page 486 (C-4-2013)
GTIN	4046356695268
Weight per piece (including packing)	121.38 g
Weight per piece (excluding packing)	115 g
Customs tariff number	85389099
Country of origin	DE

# HC-B 6-TFL-N-O1STM20S - Housing

1460346

<https://www.phoenixcontact.com/us/products/1460346>

## Technical data

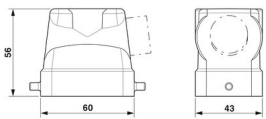
### Notes

General	For contact inserts HC-B6, BB10, DD24, M
---------	--

### Product properties

Type	B6
Product type	Housing with locking latch
Application	Standard
No. of cable outlets	1
Type of the screw connection	1x M20
Housing type	Sleeve housing
Shielded	no
Cable outlet	lateral
Pg screw connection	none

### Dimensions

Dimensional drawing	
Width	43 mm
Height	56 mm
Length	60 mm

### Material specifications

Housing surface material	Powder-coated, gray
Housing material	die-cast aluminum

### Mechanical properties

#### Mechanical data

Type of the screw connection	1x M20
Locking type	Pin

### Environmental and real-life conditions

#### Ambient conditions

Degree of protection	IP65
Ambient temperature (operation)	-40 °C ... 125 °C

# HC-B 6-TFL-N-O1STM20S - Housing

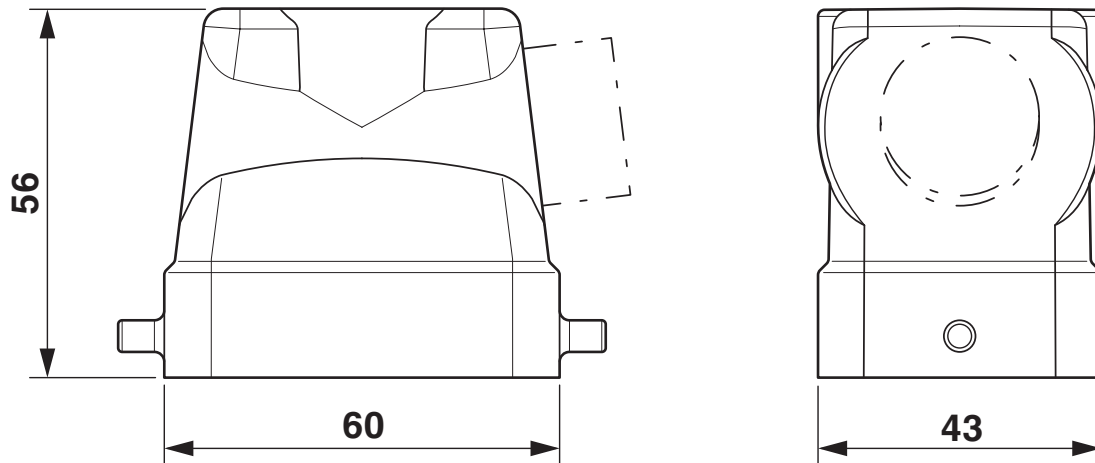


1460346

<https://www.phoenixcontact.com/us/products/1460346>

## Drawings

Dimensional drawing



Dimensional drawing

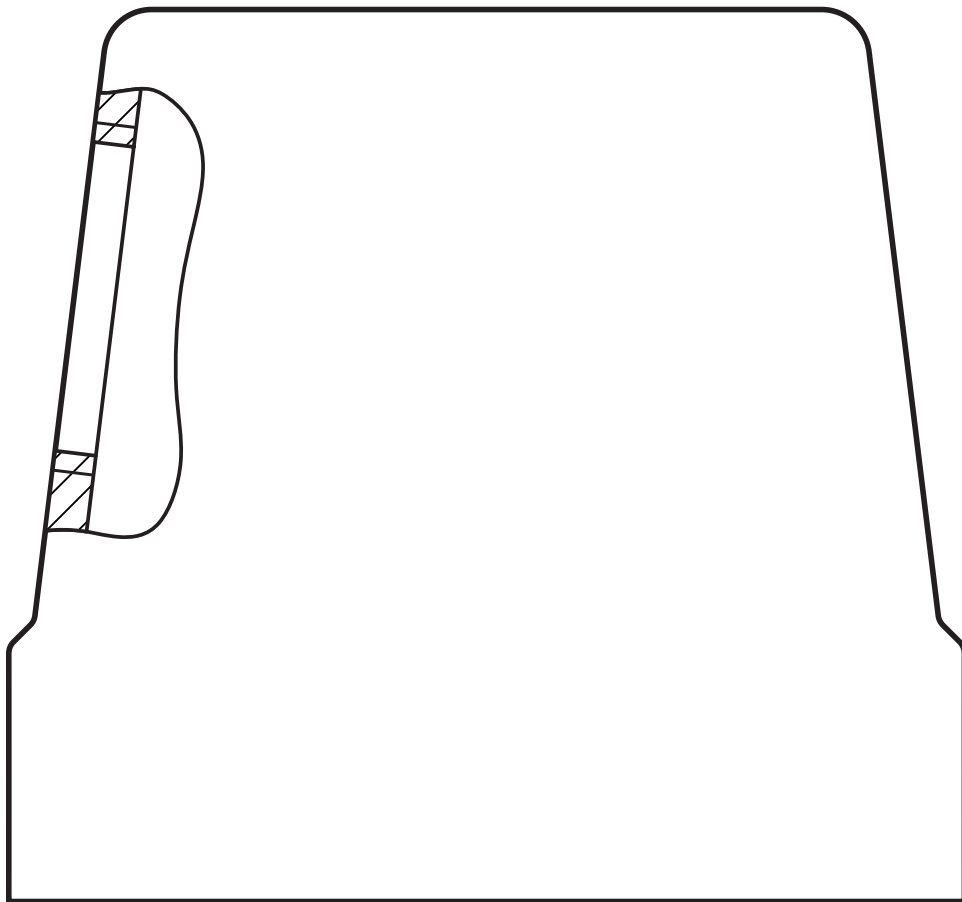
# HC-B 6-TFL-N-O1STM20S - Housing



1460346

<https://www.phoenixcontact.com/us/products/1460346>

Schematic diagram



# HC-B 6-TFL-N-O1STM20S - Housing



1460346

<https://www.phoenixcontact.com/us/products/1460346>

## Classifications

### ECLASS

ECLASS-11.0	27440202
ECLASS-13.0	27440202

### UNSPSC

UNSPSC 21.0	31261501
-------------	----------

# HC-B 6-TFL-N-O1STM20S - Housing



1460346

<https://www.phoenixcontact.com/us/products/1460346>

## Environmental product compliance

China RoHS	Environmentally friendly use period: unlimited = EFUP-e
	No hazardous substances above threshold values

# HC-B 6-TFL-N-O1STM20S - Housing

1460346

<https://www.phoenixcontact.com/us/products/1460346>

## Accessories

### G-INS-M20-S68N-PNES-GY - Cable gland

1411125

<https://www.phoenixcontact.com/us/products/1411125>



Cable gland, material for screw connection: PA, external cable diameter 6 mm ...  
12 mm, shielding: no, connecting thread: M20 x 1.5, color: silver-grey RAL 7001

---

### G-INS-M20-S68N-PNES-BK - Cable gland

1411133

<https://www.phoenixcontact.com/us/products/1411133>



Cable gland, material for screw connection: PA, external cable diameter 6 mm ...  
12 mm, shielding: no, connecting thread: M20 x 1.5, color: jet black RAL 9005

# HC-B 6-TFL-N-O1STM20S - Housing

1460346

<https://www.phoenixcontact.com/us/products/1460346>



## G-INS-M20-S68N-NNES-S - Cable gland

1411163

<https://www.phoenixcontact.com/us/products/1411163>



Cable gland, material for screw connection: Brass, nickel-plated, external cable diameter 6 mm ... 12 mm, shielding: no, connecting thread: M20 x 1.5, color: silver, with O-ring

---

## HC-M-KV-M20(11-16) - Cable gland

1645998

<https://www.phoenixcontact.com/us/products/1645998>



Metal screw connection up to 5 bar, thread length: 6 mm, cable diameter: 11 - 16 mm, WAF 27, screw connection: M20



# HC-B 6-TFL-N-O1STM20S - Housing

1460346

<https://www.phoenixcontact.com/us/products/1460346>



## G-INSEC-M20-S68N-NCRS-S - Cable gland

1411189

<https://www.phoenixcontact.com/us/products/1411189>



Cable gland, material for screw connection: Brass, nickel-plated, external cable diameter 9 mm ... 13 mm, shielding: yes, connecting thread: M20 x 1.5, color: silver, with O-ring

---

## G-INESR-M20-S68N-NEPDS-S - Cable gland

1415192

<https://www.phoenixcontact.com/us/products/1415192>



Cable gland, material for screw connection: Brass, nickel-plated, external cable diameter 6 mm ... 13 mm, shielding: no, connecting thread: M20 x 1.5, color: silver, with external strain relief, with O-ring

# HC-B 6-TFL-N-O1STM20S - Housing

1460346

<https://www.phoenixcontact.com/us/products/1460346>



## HC-M-KV-T-M20 - Cable gland

1646188

<https://www.phoenixcontact.com/us/products/1646188>

Metal screw connection with cable bend protection and strain relief, thread length: 6 mm, cable sealing area: 7.5 - 15 mm, clamping area: 10 - 16 mm, SW 24, screw connection: M20



---

## REDUC-M-KV-M20/M16 - Reducing adapter

1647611

<https://www.phoenixcontact.com/us/products/1647611>

Reducing adapter, connecting thread: M20 x 1.5, color: silver, with O-ring



## HC-B 6-TFL-N-O1STM20S - Housing

1460346

<https://www.phoenixcontact.com/us/products/1460346>



## ENLAR-M-KV-M20/M25 - Extension adapter

1647666

<https://www.phoenixcontact.com/us/products/1647666>

Extension adapter, connecting thread: M20 x 1.5, color: silver, with O-ring



---

## HC-M-BS-M20 - Screw plug

1645846

<https://www.phoenixcontact.com/us/products/1645846>

Screw plug, material for screw connection: Brass, nickel-plated, connecting thread: M20 x 1.5, color: silver



---

Phoenix Contact 2023 © - all rights reserved  
<https://www.phoenixcontact.com>

Phoenix Contact USA  
586 Fulling Mill Road  
Middletown, PA 17057, United States  
(+717) 944-1300  
[info@phoenixcon.com](mailto:info@phoenixcon.com)